

## Article

# Personalized Immunomonitoring Uncovers Molecular Networks that Stratify Lupus Patients

Romain Banchereau,<sup>1,7</sup> Seunghee Hong,<sup>5,7</sup> Brandi Cantarel,<sup>1</sup> Nicole Baldwin,<sup>1</sup> Jeanine Baisch,<sup>1</sup> Michelle Edens,<sup>1</sup> Alma-Martina Cepika,<sup>1</sup> Peter Acs,<sup>1</sup> Jacob Turner,<sup>1</sup> Esperanza Angulano,<sup>1</sup> Parvathi Vinod,<sup>1</sup> Shaheen Kahn,<sup>1</sup> Gerlinde Obermoser,<sup>1</sup> Derek Blankenship,<sup>1</sup> Edward Wakeland,<sup>2</sup> Lorien Nassi,<sup>3,3</sup> Alisa Gotte,<sup>2,3,4</sup> Marilyn Punaro,<sup>2,3</sup> Yong-Jun Liu,<sup>1,5</sup> Jacques Banchereau,<sup>6</sup> Jose Rossello-Urgell,<sup>1</sup> Tracey Wright,<sup>2,3</sup> and Virginia Pascual<sup>1,3,\*</sup>

<sup>1</sup>Baylor Institute for Immunology Research, Dallas, TX 75204, USA

<sup>2</sup>UT Southwestern Medical Center, Dallas, TX 75235, USA

<sup>3</sup>Texas Scottish Rite Hospital for Children, Dallas, TX 75219, USA

<sup>4</sup>Vanderbilt University School of Medicine, Nashville, TN 37232, USA

<sup>5</sup>MedImmune, Gaithersburg, MD 20878, USA

<sup>6</sup>The Jackson Laboratory for Genomic Medicine, Farmington, CT 06030, USA

<sup>7</sup>Co-first author

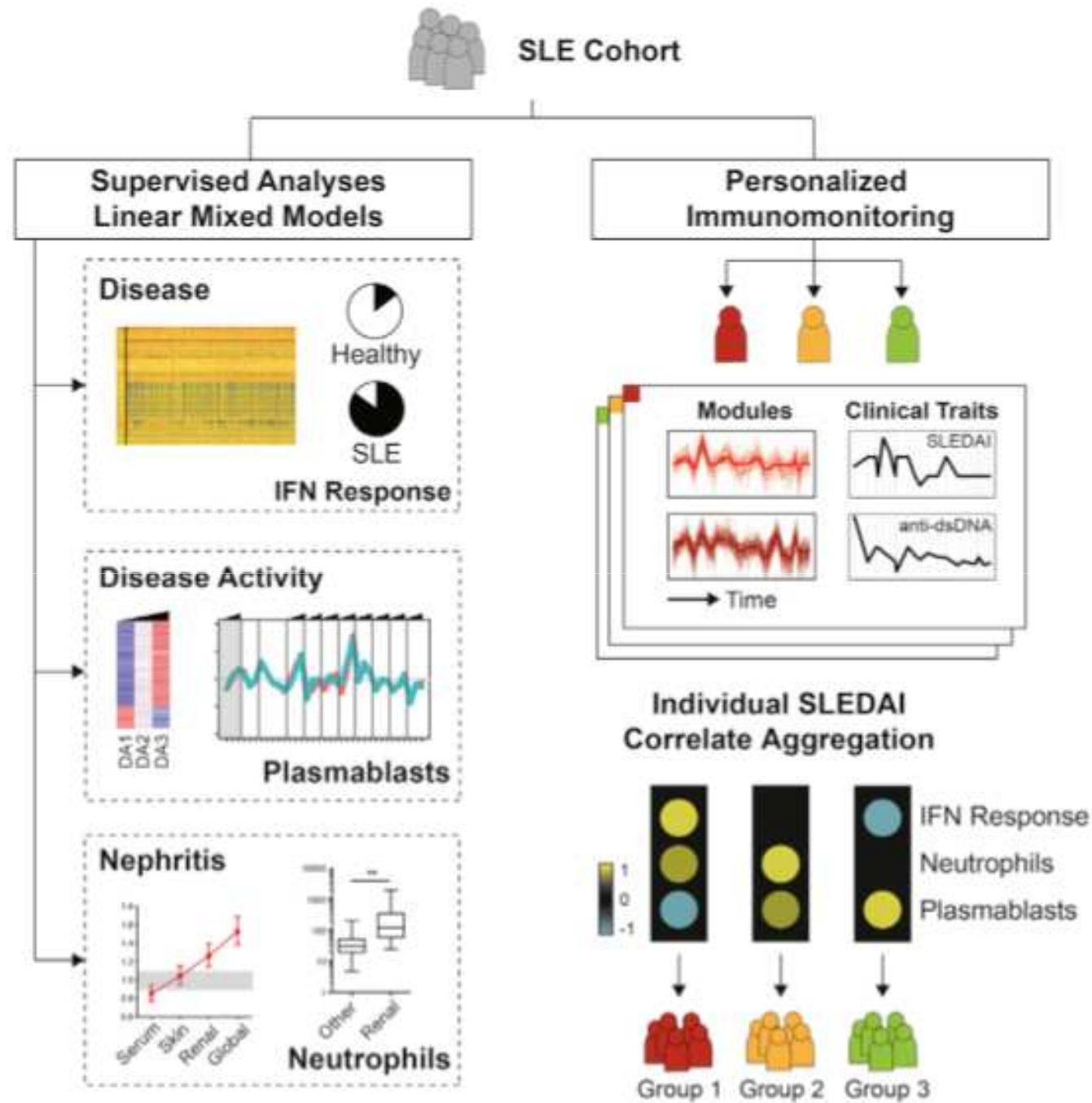
❖ Clinical and transcriptional profiling of 158 pediatric lupus patients longitudinally followed up to a period of 4 years

- ❖ Clinical and transcriptional profiling of 158 pediatric lupus patients longitudinally followed up to a period of 4 years
- ❖ IFN and plasmablast signatures ++

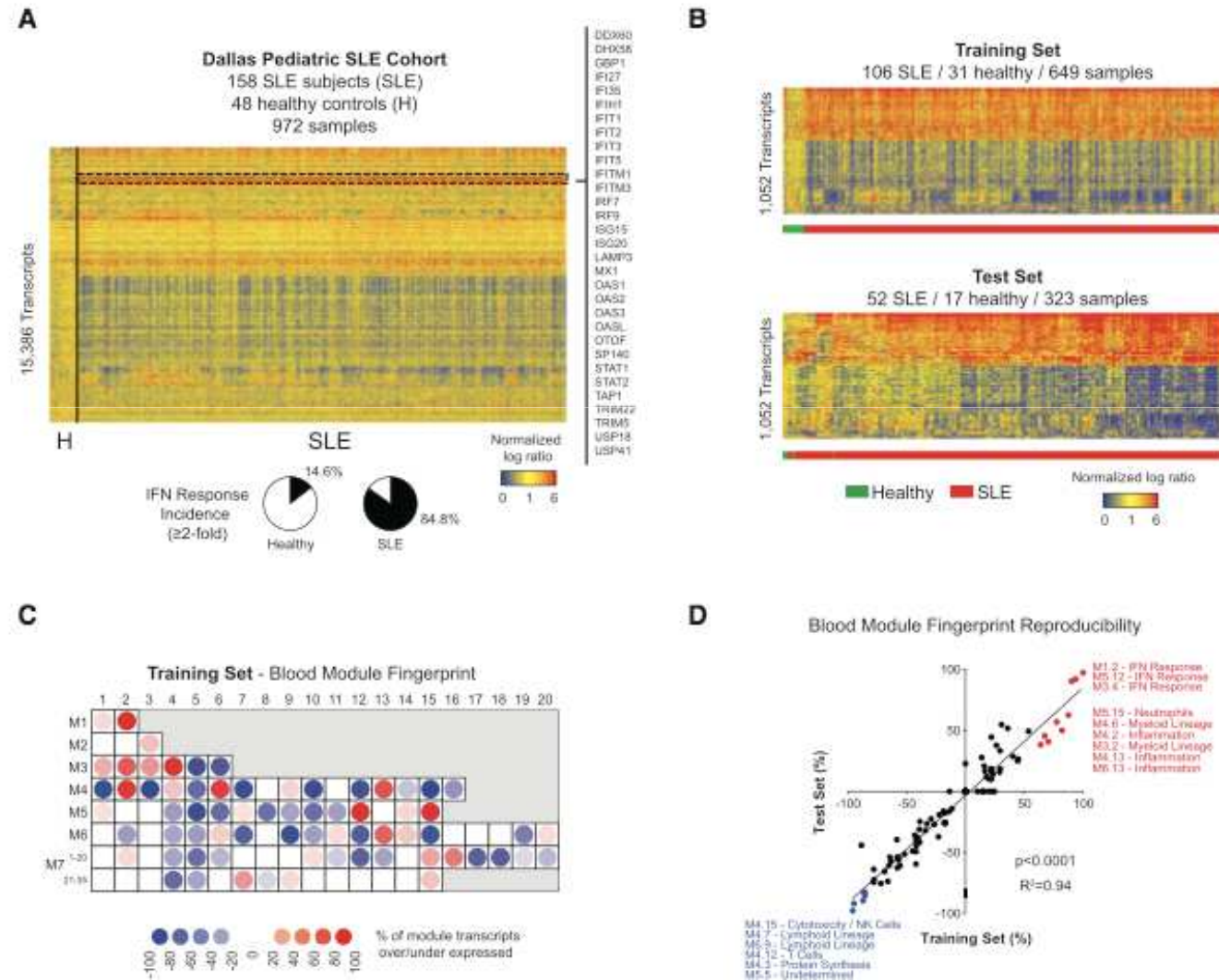
- ❖ Clinical and transcriptional profiling of 158 pediatric lupus patients longitudinally followed up to a period of 4 years
- ❖ IFN and plasmablast signatures ++
- ❖ Neutrophil-related signatures associate with progression to active nephritis

- ❖ Clinical and transcriptional profiling of 158 pediatric lupus patients longitudinally followed up to a period of 4 years
- ❖ IFN and plasmablast signatures ++
- ❖ Neutrophil-related signatures associate with progression to active nephritis
- ❖ Molecular correlates of disease activity stratify patients into seven major groups

- ❖ Clinical and transcriptional profiling of 158 pediatric lupus patients longitudinally followed up to a period of 4 years
- ❖ IFN and plasmablast signatures ++
- ❖ Neutrophil-related signatures associate with progression to active nephritis
- ❖ Molecular correlates of disease activity stratify patients into seven major groups
- ❖ Personalized SLE transcriptional immunomonitoring (to identify modules of longitudinally co-expressed transcripts for individual patients and uncover associated clinical traits)

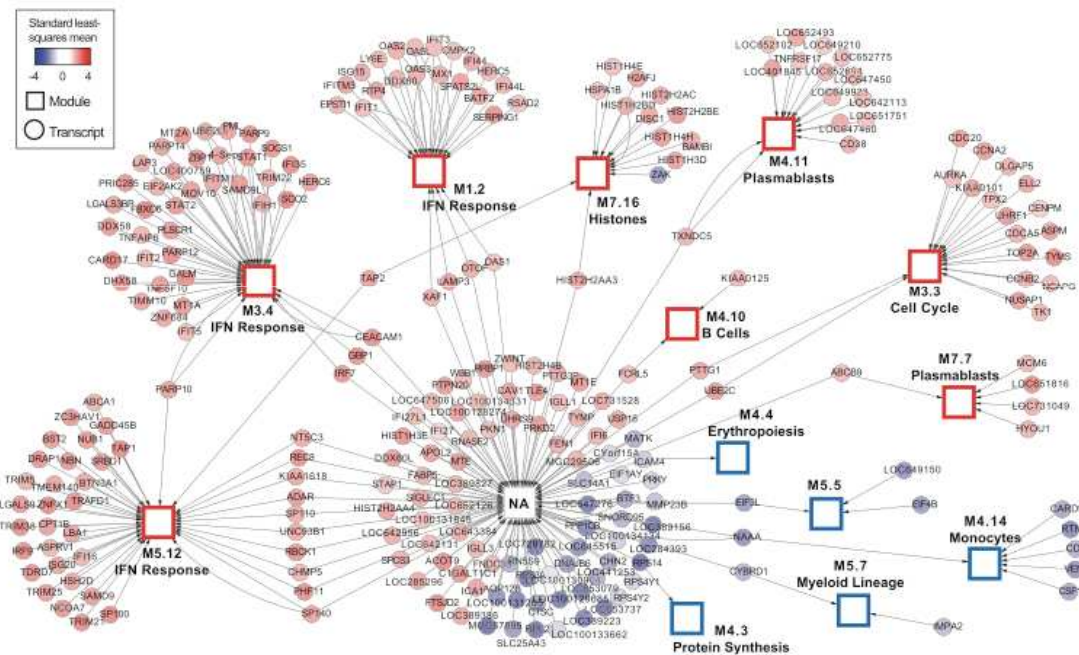
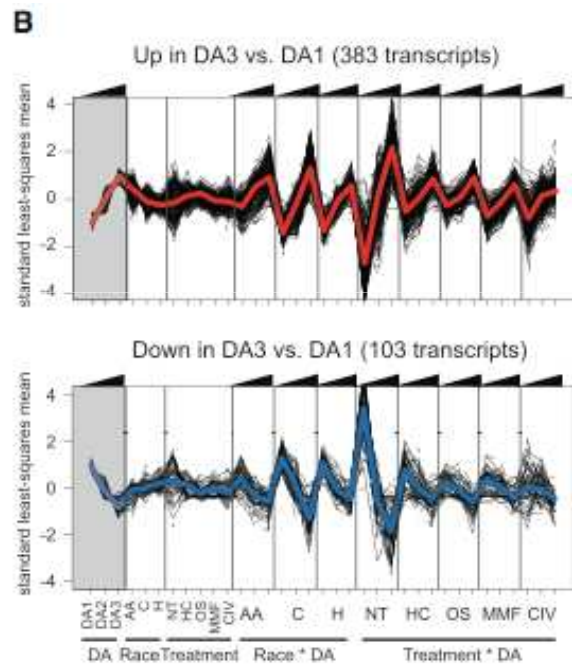


# The SLE blood transcriptional fingerprint





# Transcriptional Correlates of Disease Activity



# A Neutrophil Signature Associates with Lupus Nephritis

